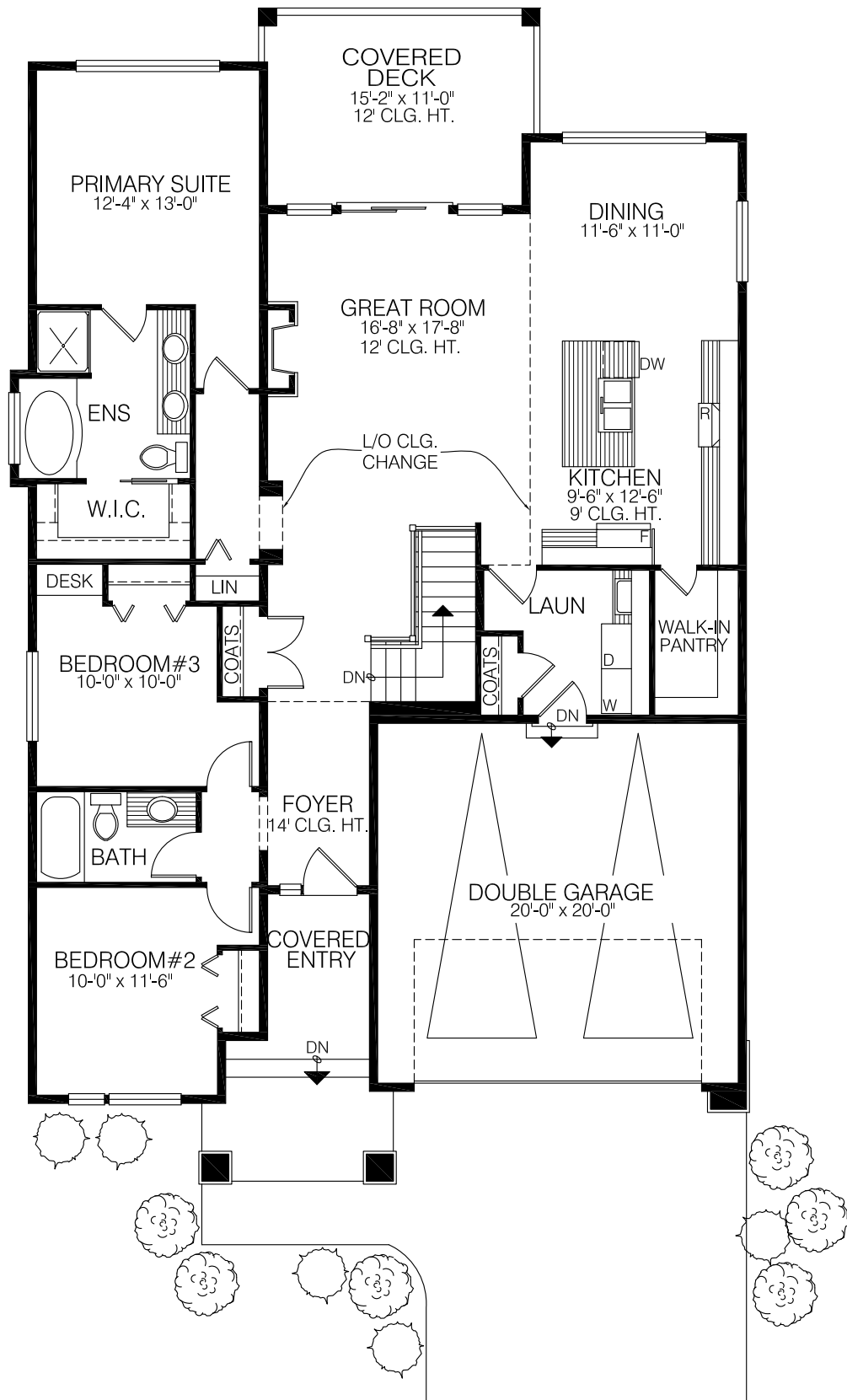


## BASEMENT PLAN

FINISHED AREA: 1044 SQ. FT. (97.0 M<sup>2</sup>)  
 UNFINISHED AREA: 598 SQ. FT. (55.6 M<sup>2</sup>)  
 8' (+/-) CEILING HEIGHT

K O N A



1-3-691

## MAIN FLOOR PLAN

FINISHED AREA = 1648 SQ. FT. (153.1 M<sup>2</sup>)

9' CEILING HEIGHT

WIDTH - 40'-0" (12.2 M)

DEPTH - 65'-4" (19.9 M)