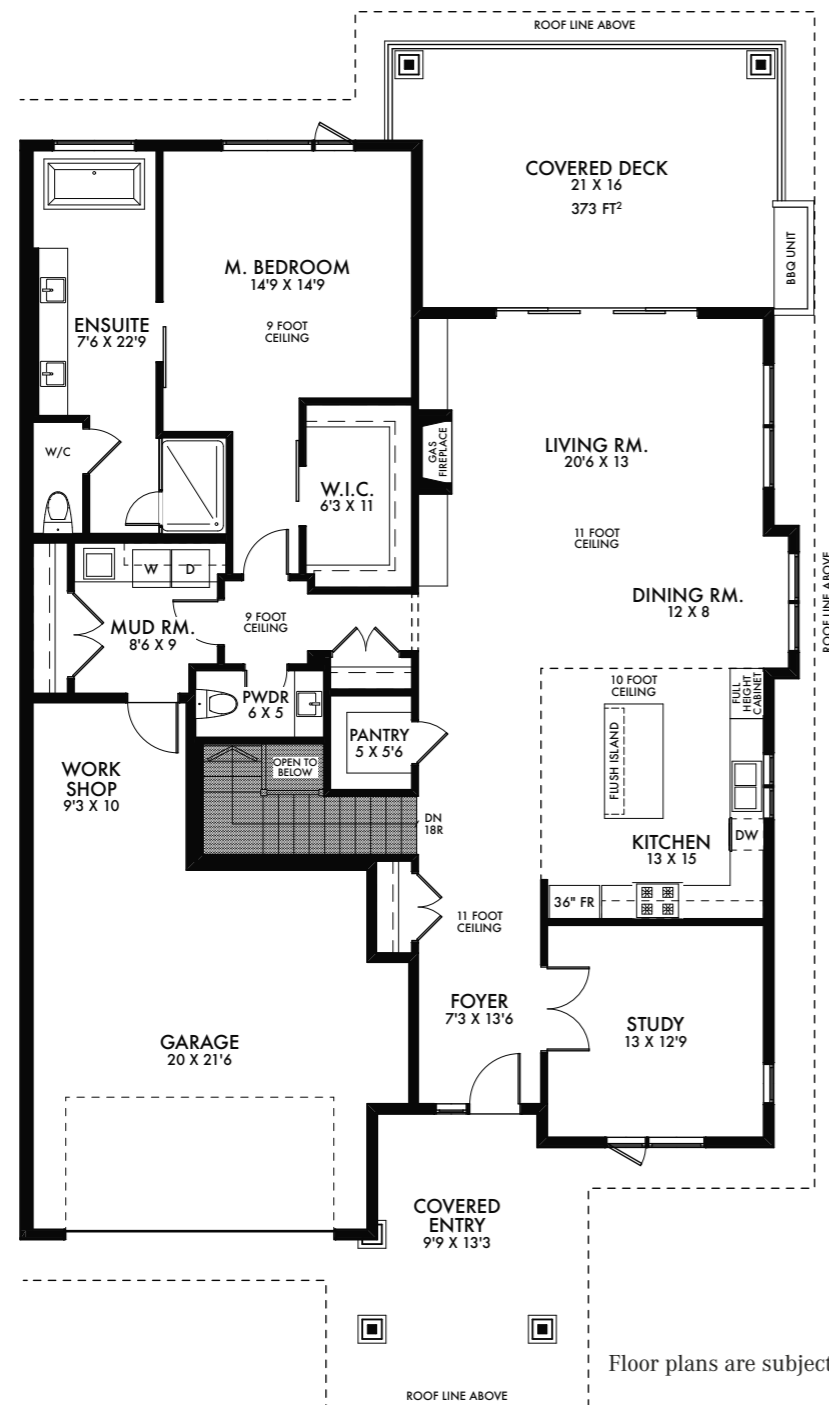


# CHELAN

## SEMI-DETACHED TOWNHOMES

Total living area: 3,566 ft<sup>2</sup>  
 MAIN LEVEL: 1,910 ft<sup>2</sup>  
 Outdoor living: 373 ft<sup>2</sup> • Garage: 569 ft<sup>2</sup>



Floor plans are subject to change without notice.

We have reserved 10 of the best view lots at Lost Creek Point for those who want maintenance freedom without sacrificing size. The expansive 1900 square foot main floor is bright and open with side windows allowing lots of light in. The kitchen, dining and living room all look out onto the massive covered deck. The master bedroom, large walk-in closet and upscale 5-piece ensuite are conveniently located just around the corner.

Ceilings range between 9 and 11 feet throughout the home. The walkout level is roomy with two large bedrooms, as well as an entertainment area with a gas fireplace, wet bar, and private 21'x16' covered patio. An oversized garage easily accommodates 2 cars side by side and offers additional space for bikes, a workshop or storage. Need an elevator? It's all roughed in. Only the best materials have been chosen for the interior design of the Chelan homes.

LOWER LEVEL: 1,647 ft<sup>2</sup> • Storage/Mech.: 317 ft<sup>2</sup>

